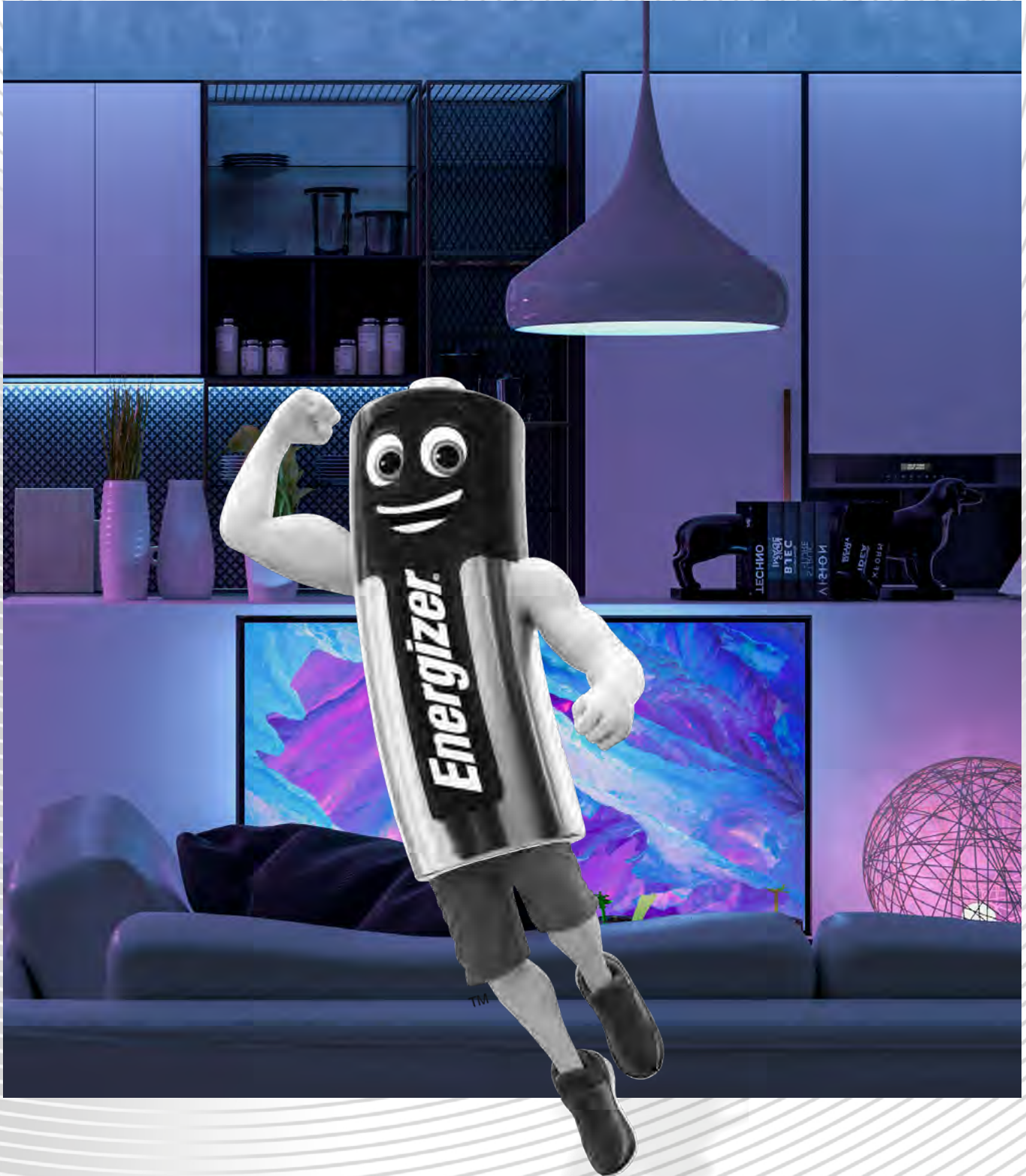


# **Energizer<sup>®</sup>** **SMART**

**NEW**





**SMART LED  
GLS BC/B22**



**Energizer®**  
**SMART LED  
GLS BC/B22**

**SMART LED  
GLS BC/B22**



**VARIABLE WHITE**



**& COLOUR MODES**



**800**  
LUMENS



**9w**  
**60W**  
REPLACEMENT

## SPECIFICATIONS

Smart LED GLS BC/B22

800 Lumens

Group Control

Variable White

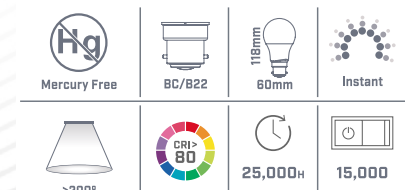
Colour Modes

Power: 9W

60W Replacement

Scheduling

Remote Access & Voice Control





# Energizer®

## SMART LED GLS ES/E27



VARIABLE WHITE  
● ● ●  
& COLOUR MODES  
● ● ● ● ● ● ● ●

**800**  
LUMENS



**9w**  
**60w**  
REPLACEMENT

### SPECIFICATIONS

Smart LED GLS ES/E27  
800 Lumens  
Group Control  
Variable White  
Colour Modes  
Power: 9W  
60W Replacement  
Scheduling  
Remote Access & Voice Control



SMART LED  
GLS ES/E27

SMART LED  
GLS ES/E27



\* Approximate measurements.

Download the free 'ENERGIZER SMART' APP on your mobile or tablet from 'Google Play' or the 'App Store'



**SMART LED  
CANDLE  
SES/E14**



**Energizer®**  
**SMART LED  
CANDLE  
SES/E14**

**SMART LED  
CANDLE  
SES/E14**



**VARIABLE WHITE**



**& COLOUR MODES**



**400**  
LUMENS



**GROUP  
CONTROL**

**5w  
40w  
REPLACEMENT**

## SPECIFICATIONS

Smart LED Candle SES/E14

400 Lumens

Group Control

Variable White

Colour Modes

Power: 5W

40W Replacement

Scheduling

Remote Access & Voice Control



**2,700K** **6,500K**  
Tunable White: Adjust Colour  
Temperature From Warm to Day Light  
**Colour Changing: Choose Any  
Colour To Suit Your Mood**

**Powered by  
tuya®  
Intelligence  
Inside**



Download the free 'ENERGIZER SMART' APP on your mobile or tablet from 'Google Play' or the 'App Store'

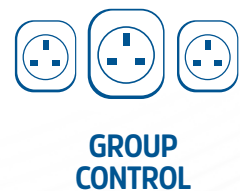
\* Approximate measurements.



# Energizer®

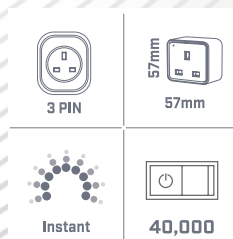
## SMART WIFI PLUG SOCKET

SMART WIFI  
PLUG SOCKET



### SPECIFICATIONS

Electrical Rating 230V AC, 50Hz  
13A Load, 2990W General Use  
Working Temp -20 - 40°C  
Wireless Type WiFi 2.4GHz  
For Indoor Use Only  
Dimensions mm: 57(w) x 57(h) x 61(d)\*



SMART WIFI  
PLUG SOCKET



\* Approximate measurements.

Download the free 'ENERGIZER SMART' APP on your mobile or tablet from 'Google Play' or the 'App Store'





**SMART LED  
5 METRE  
FLEXI STRIP**

# Energizer®

## SMART WIFI 5 METRE FLEXI STRIP

**SMART LED  
5 METRE  
FLEXI STRIP**



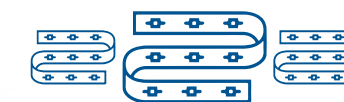
**VARIABLE WHITE**



**& COLOUR MODES**



**SCHEDULING**



**GROUP  
CONTROL**



**REMOTE ACCESS  
& VOICE CONTROL**

TM

### SPECIFICATIONS

LED Flexi Strip: 5.0m \*

Group Control

Colour Changing: RGBW

Warm White: 3,000k

Scheduling

Remote Access

Voice Control

Cut to Size LED Strip: 10cm Intervals

Plug & Play Simplicity - 3M™ Adhesive Strip

Dimensions mm: 10(w) x 5000(h) x 3(d) \*

Multiple Modes & Features

Non Linkable

LED Strip IP Rating: IP65

Plug in Adaptor IP Rating: IP20

Plug to Controller: 1.50m \*

Controller to Strip: 0.25m \*

Dimmable

10mm



Mercury Free



Instant



25,000h



**APP DIMMABLE**

3,000K

Temperature - Warm White



Colour Changing: Choose Any Colour To Suit Your Mood



Download the free 'ENERGIZER SMART' APP on your mobile or tablet from 'Google Play' or the 'App Store'

\* Approximate measurements.



**NEW**



  
**SUPREME**  
I M P O R T S

**[orders@supreme.co.uk](mailto:orders@supreme.co.uk) • [supremeoffers.co.uk](http://supremeoffers.co.uk)**

Phone: +44 (0)161 872 5151 • Company Reg No. 05292196 • VAT Reg. No. 889 9611 43